

na-mk.com



norfolk+ashton

MILTON KEYNES

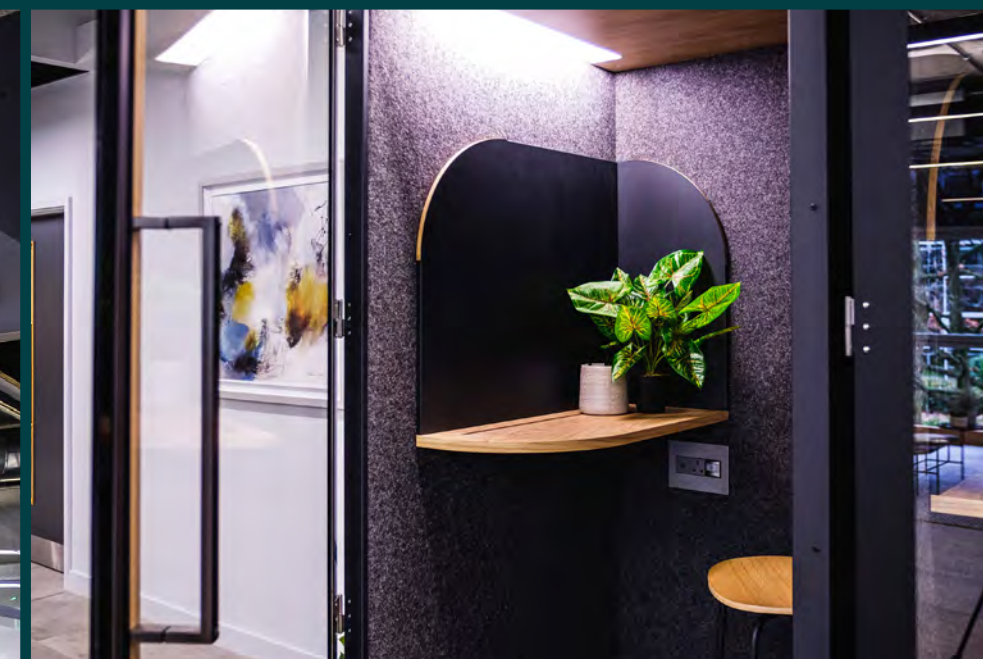
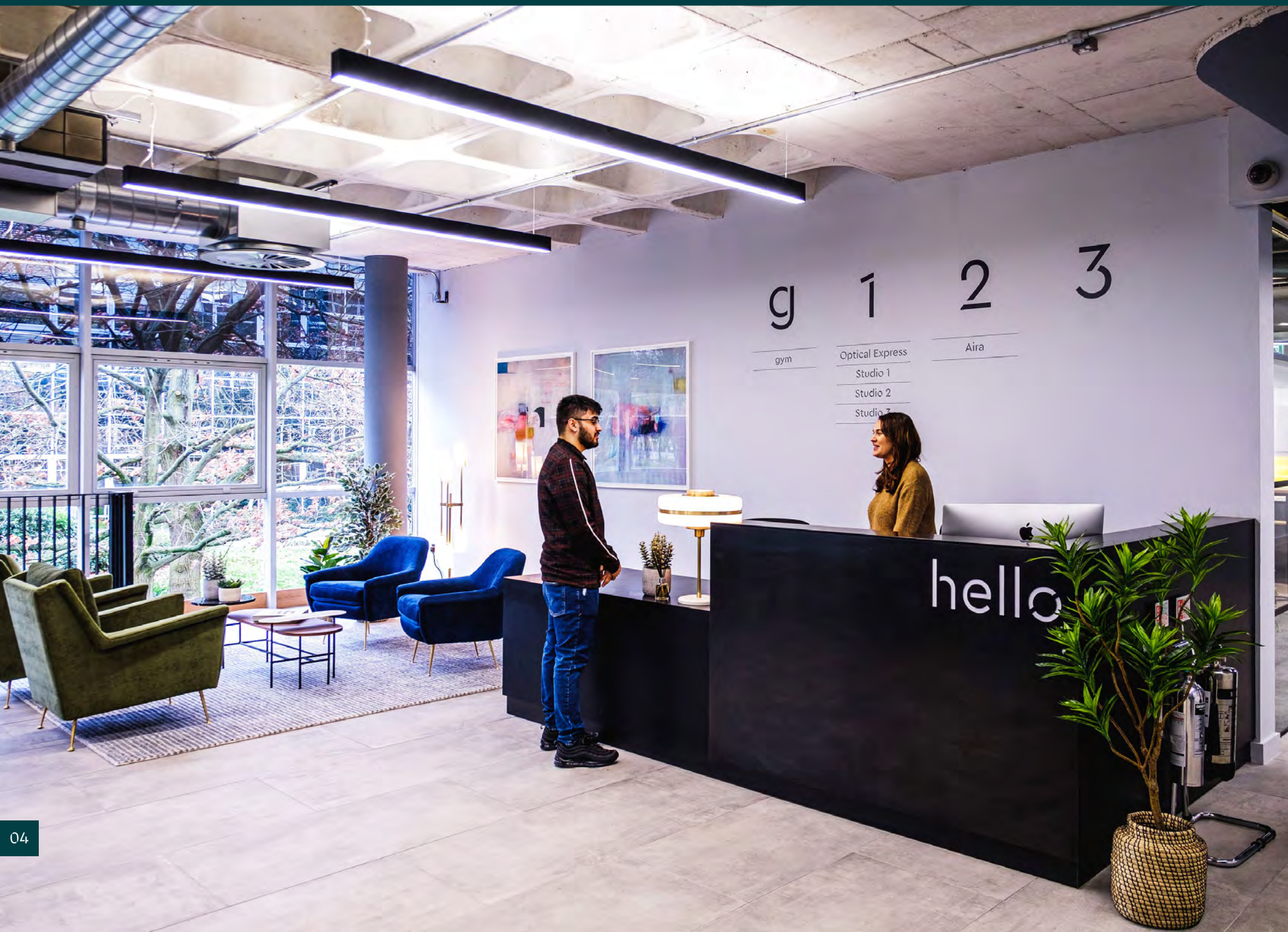


# welcome to your workplace

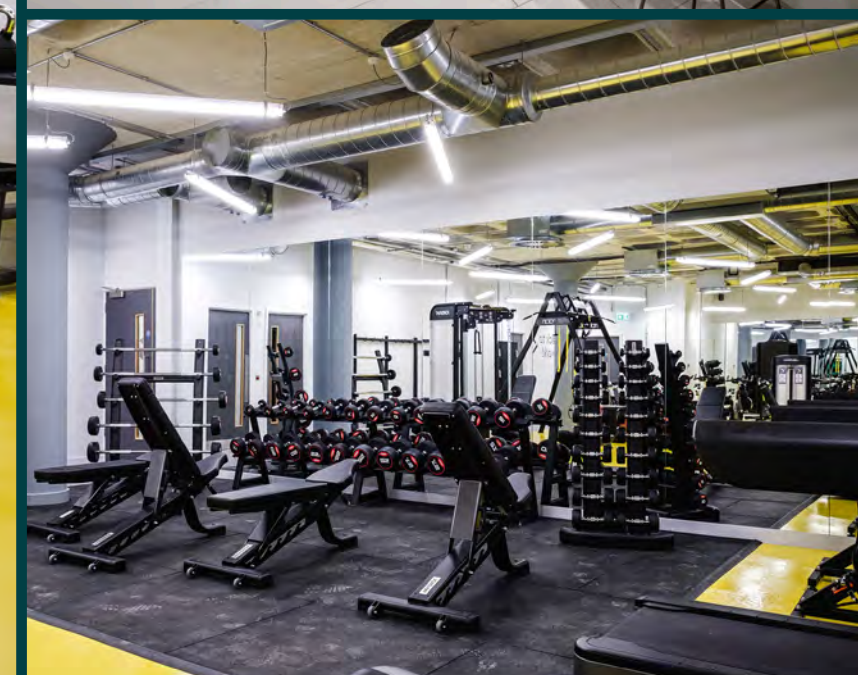
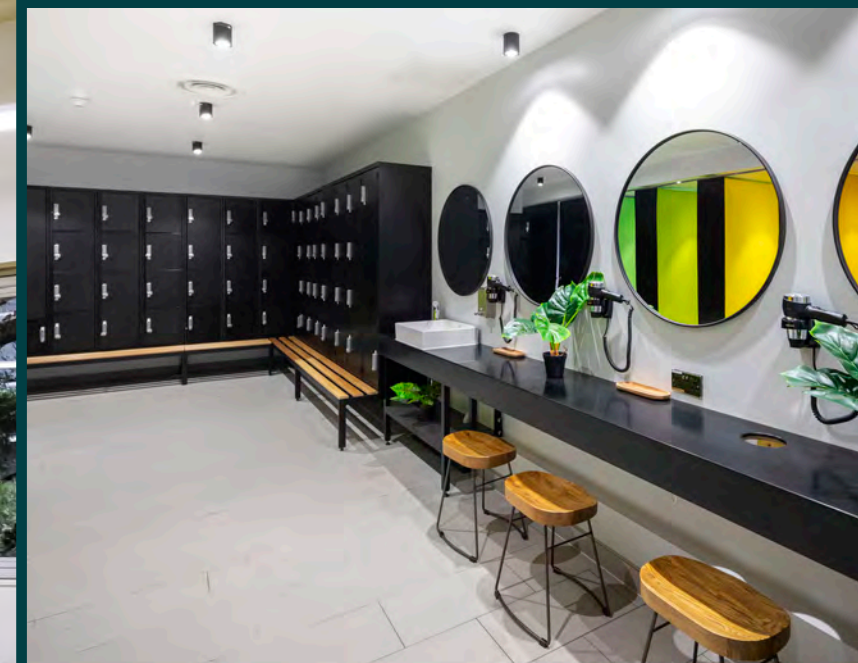
Contemporary, collaborative and creative office  
space designed for forward thinking businesses.











work in,  
work out

At Ashton & Norfolk we understand the need for businesses to provide the best possible amenities for their staff.

A new fitness studio free for use by occupiers will provide a high quality gym, weekly classes, new changing facilities, showers and bike storage.



# meet, lunch, drink coffee, play or just relax

The cafe and co-working lounge offers a space to, think, eat, drink, collaborate, chat and inspire. Designed to enable informal meetings or simply a break-out workspace with free wifi, it also serves some of the best coffee, breakfast and lunches in Central MK.





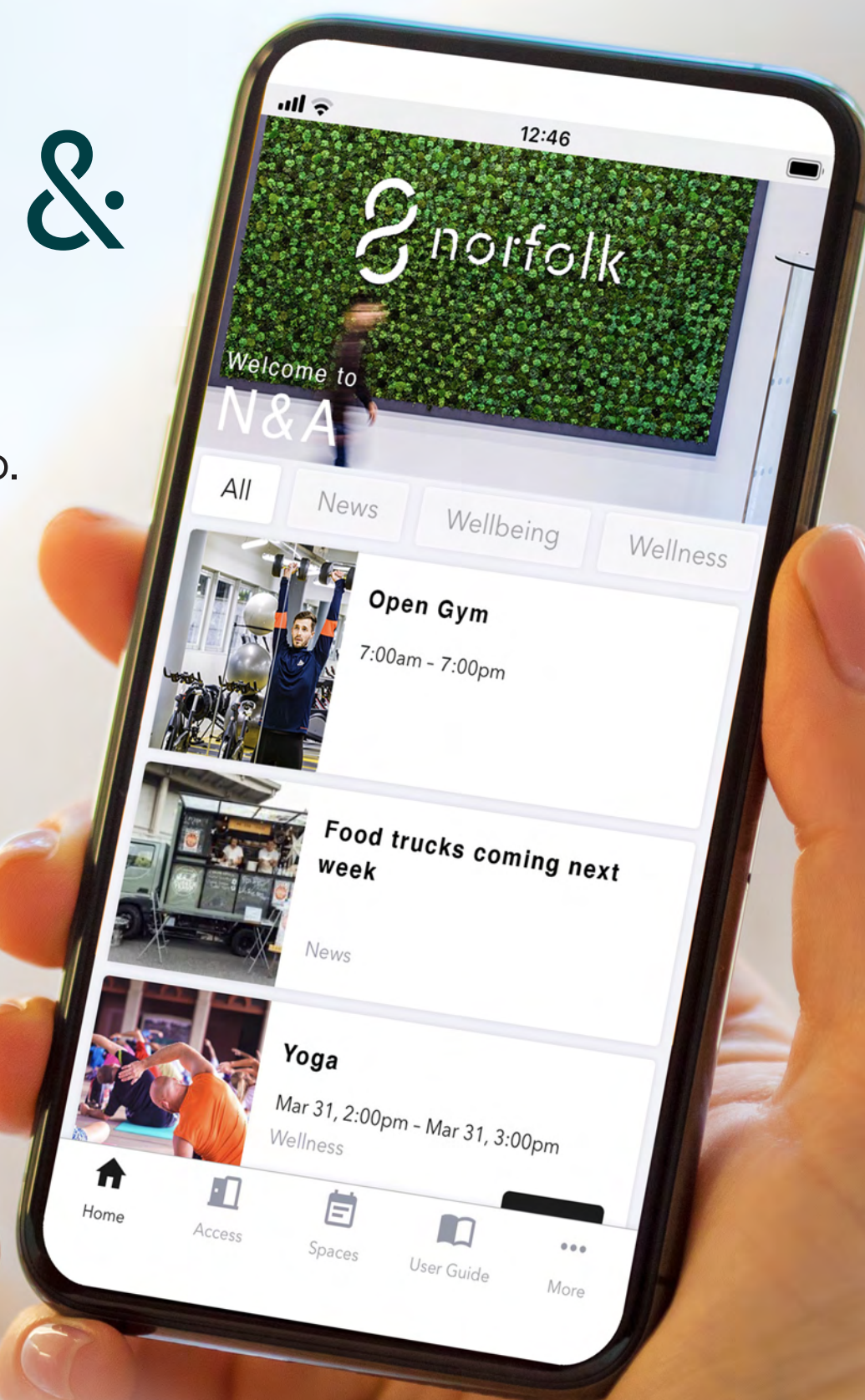
# a business hub





# Life at norfolk & ashton

Introducing the Life App.



**Life makes your office building an even better place to work by helping tenants, building staff and local businesses connect. We believe everyday is important, let's make the most of it.**

Helping everyone connect in the easiest way possible, the Life app helps you to customise your day at the touch of a button.

Simply open the app, check out the latest café deals, book into the next gym class or attend one of our curated events.

**Life is here for you.**







# workspace to a high specification

Norfolk & Ashton offer clean floor plates with ample natural light and inherent flexibility for subdivision.



Café / restaurant



Gym & fitness classes



Showers & changing facilities



Cycle storage



Concierge reception



Breakout workspace



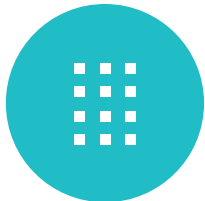
New air-conditioning



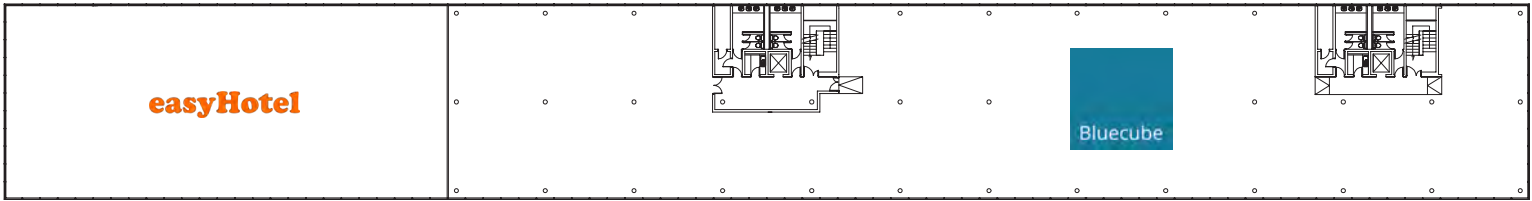
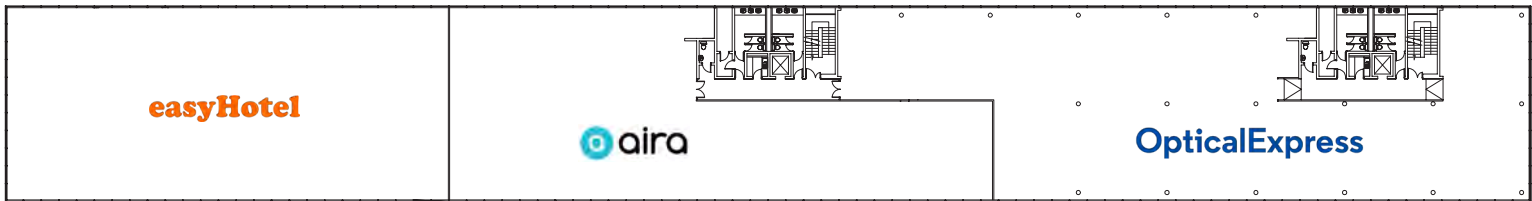
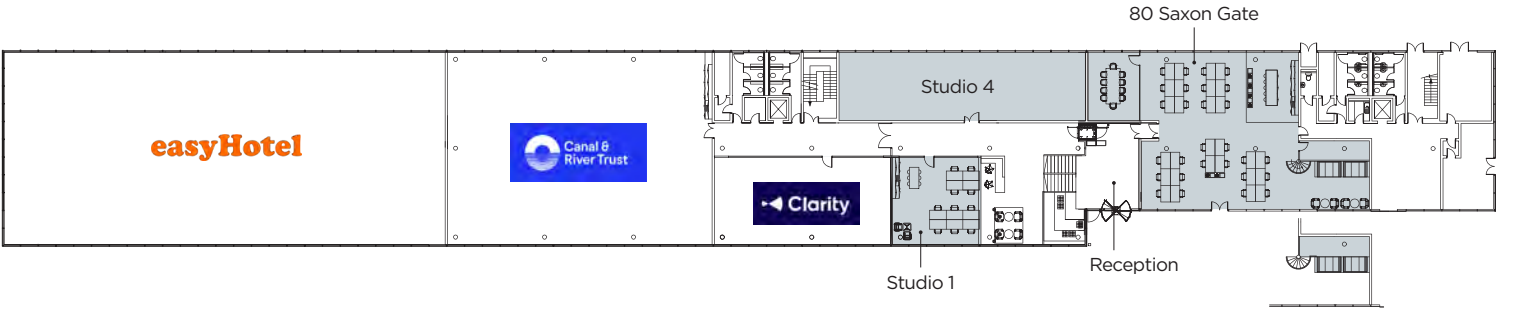
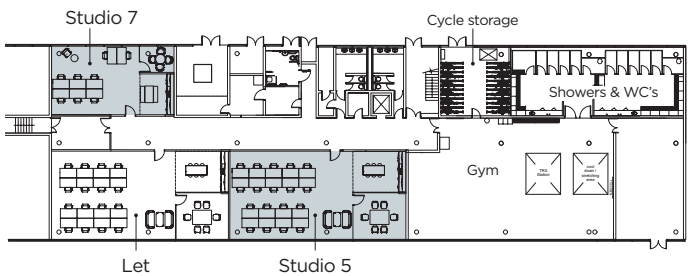
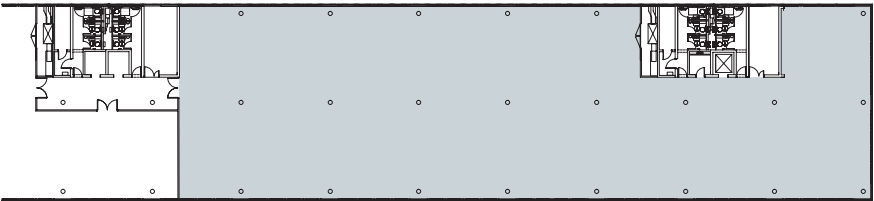
Excellent car parking



Gigabit enabled broadband



LED lighting



ashton



View café & reception virtual tour

Part third floor west - 9,429 sq ft

3

norfolk

Studio 5 - 18 desks  
Studio 7 - 8 desks

G



View Studio 1 virtual tour - 10 desks

Studio 4 - 16 desks

80 Saxon Gate - 2,521 sq ft

1

Let

2

Let

3



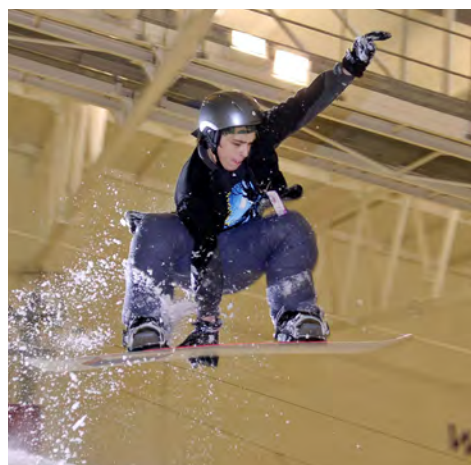
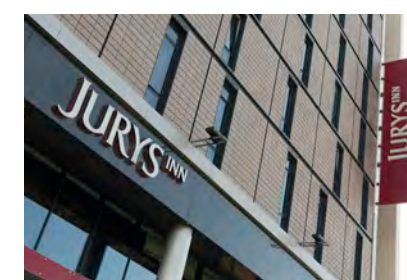
View floor full virtual tour





# ski, climb, shop, relax in the park or simply wine & dine

Central Milton Keynes benefits from an abundance of leisure and retail amenities all within a short walk.





# strategic city centre location in one of the fastest growing cities in the UK



MILTON KEYNES  
CENTRAL

A5

A509

WITAN  
STUDIOS

15 MIN  
WALK

norfolk+ashton

THE HUB

SILBURY  
BOULEVARD

FRED ROCHE  
GARDENS

SAXON GATE

CENTRE MK  
SHOPPING  
CENTRE

MIDSUMMER  
BOULEVARD

INTU  
SHOPPING  
CENTRE

H6 - CHILDS WAY

AVEBURY  
BOULEVARD

THEATRE  
DISTRICT

XSCAPE

A selection of major retailers all within a short walk.

## INTU SHOPPING CENTRE



Superdry



BOSS  
HUGO BOSS



FIVE GUYS

HOLLISTER

NEW  
LOOK



TOPSHOP

ZARA

LUSH

SPORTS  
DIRECT.COM

## THE HUB



BROWNS



SUBWAY



# great company

We've already delivered 45,000 sq ft of contemporary work space to occupiers' exacting requirements.

Starting from a blank canvas we can design your office to suit your requirements and deliver your fit out for you.

**Broadspire®**  
A CRAWFORD COMPANY

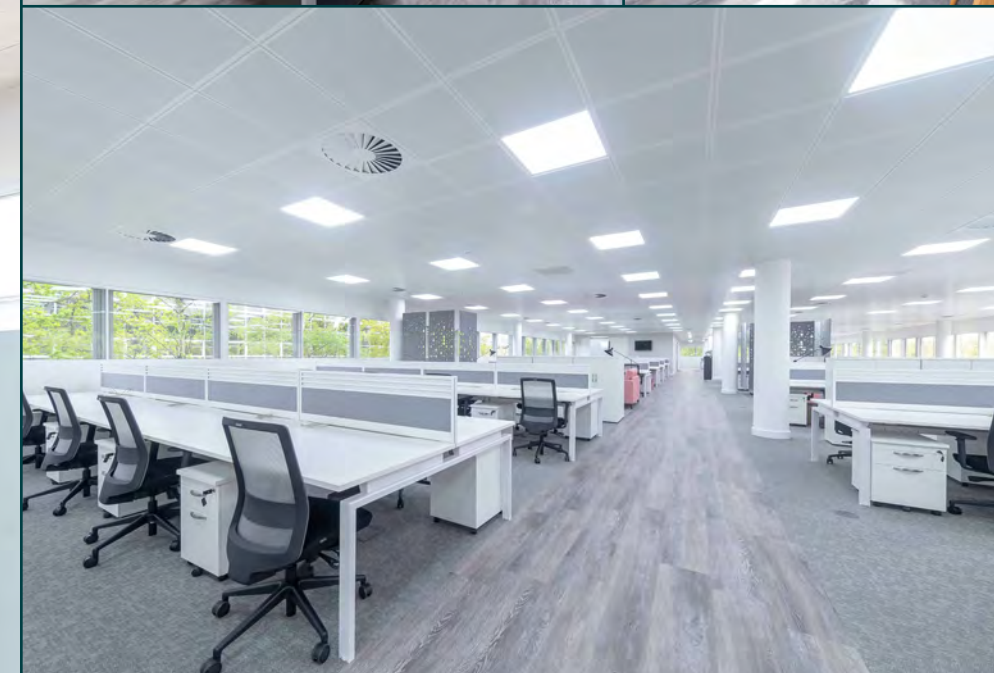
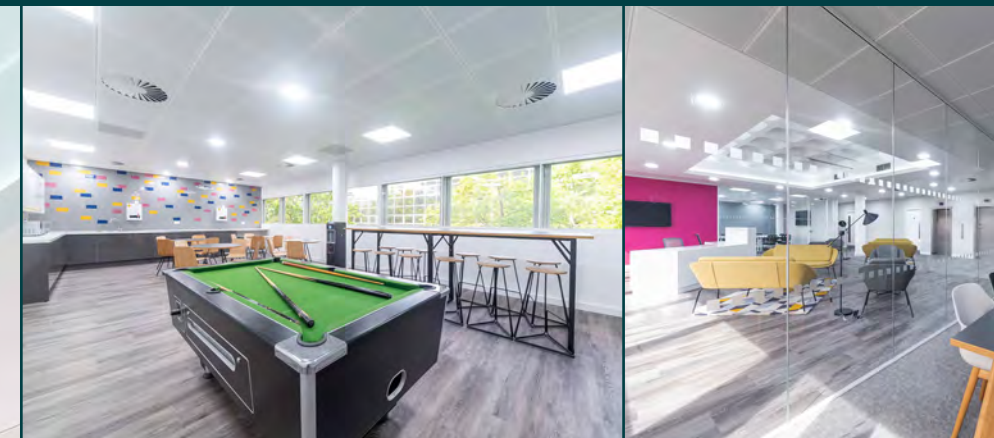
  
**vivawallet**

**Jelf**

**easyHotel**

**CityFibre**

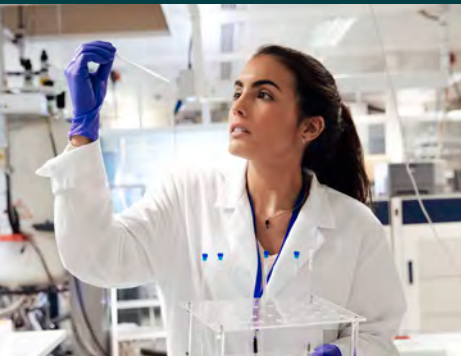
 **aira**





# Milton Keynes is the UK's No 1 location for growth

Situated at the heart of the growth corridor, Milton Keynes is poised for further growth and will benefit significantly from major infrastructure improvements between Oxford and Cambridge.



No.1

consistently ranked as one of the top UK cities for both existing and forecast growth in employment and Gross Value Added (GVA)

79%

population increase since 2002 at 4.6% per annum and one of the fastest growing cities in the UK

£250b

per year could be generated to the economy by 2050

£1bn

of private investment committed in the last decade

25%

higher productivity per worker than the national average

1m

new homes by 2050 doubling the rate of housebuilding

### Occupiers within Milton Keynes

- Santander
- Network Rail
- Volkswagen Financial Services
- Red Bull Racing
- Goldman Sachs
- Rightmove
- WD40
- Home Retail Group
- DHL
- Deloitte
- Dentons
- PWC
- Mercedes Benz
- Xero
- T Systems
- Computacentre
- Unisys
- SAI Global
- Unify
- NHBC
- Marshall Amplification
- BSI
- Domino's Pizza Group
- Motors Insurers Bureau

## travel times

By Rail	Mins
Northampton	16
Watford Junction	21
Coventry	29
London Euston	33
Oxford (Due 2023)	40
Cambridge (Due 2023)	40
Birmingham New Street	52
Manchester Piccadilly	97
Liverpool Lime Street	131

By Road	Miles
M1 (J14)	3
M1 (J15)	8
Northampton	17
Oxford	40
Coventry	44
Cambridge	49
Birmingham	71
Central London	97

Airports	Mins
London Luton	30
London Heathrow	70
East Midlands	75
Birmingham International	77
London Stansted	86







**norfolk+ashton**

MILTON KEYNES

**na-mk.com**



**Tom Harker**

**t:** 01908 544 905

**e:** [tharker@lsh.co.uk](mailto:tharker@lsh.co.uk)

**Jonathan Whittle**

**t:** 01908 224 763

**e:** [jonathan@louchshacklock.com](mailto:jonathan@louchshacklock.com)

**Lambert  
Smith  
Hampton**

**01908 604 630**



**louch  
shacklock**

**01908 224760**

**[louchshacklock.com](http://louchshacklock.com)**

Lambert Smith Hampton & Louch Shacklock for themselves and for the vendors or lessors of this property, whose agents they are give notice that: a) all particulars are set out as general outline only for the guidance of intending purchasers or lessees, and do not comprise part of an offer or contract: b) all descriptions, dimensions, references to condition and necessary permissions for use and occupation, and other details are given in good faith and are believed to be correct but any intending purchasers or tenants should not rely on them as statements or representations of fact but must satisfy themselves by inspection or otherwise as to the correctness of each of them. c) no person in the employment of Lambert Smith Hampton or Louch Shacklock has any authority to make any representation of warranty whatsoever in relation to this property.

Compiled July 2021.